

DESCRIPTION
The S 1/2 of NE 1/4 of SE 1/4 and the
N 1/2 of SE 1/4 of SE 1/4, SECTION 33, TOWNSHIP
48 South, RANGE 42 East, Broward County, Florida.

KNOW ALL MEN BY THESE PRESENTS: That we, the undersigned as officers of POMPANO BEACH LANDS, INC., a Florida Corporation, owners of the lands shown and included on this Plat have caused said lands to be subdivided and platted as shown hereon. All previous plats of said lands are hereby voided, annulled, cancelled and superseded by this Plat.

WE, the undersigned hereby dedicate to the perpetual use of the public for the proper uses thereof, all thoroughfares shown on this plat.

IN WITNESS WHEREOF: We have hereunto set our hands and affixed our seals.

WITNESSES:
R. W. Goheen
Margaret L. Snapp
Wade Hampton Horn, Sr. (SEAL)
POMPANO BEACH LANDS, INC. PRESIDENT
Roy E. Eubanks (SEAL)
POMPANO BEACH LANDS, INC. SECRETARY

STATE OF FLORIDA, }
COUNTY OF BROWARD } ss

I HEREBY CERTIFY: That on this day personally appeared before me, an officer duly authorized to administer oaths and take acknowledgements, WADE HAMPTON HORN, Sr. and ROY E. EUBANKS, President and Secretary of POMPANO BEACH LANDS, INC., and they acknowledged before me that they executed the foregoing dedication as such officers of said corporation in the name of said corporation.

WITNESS: My hand and official seal at Fort Lauderdale, Broward County, Florida, this 30th day of DECEMBER, 1952.

J. W. McLaughlin
NOTARY PUBLIC - STATE OF FLORIDA
My Commission Expires: Feb. 16th 1953

I HEREBY CERTIFY: that this Plat complies with the provisions of "AN ACT TO REGULATE THE MAKING OF SURVEYS AND FILING FOR RECORD OF MAPS AND PLATS IN THE STATE OF FLORIDA," approved by the Governor, June 11th, 1925.

Ted Cabot
CLERK OF THE CIRCUIT COURT
By: Dorothy Adams
DEPUTY CLERK

This instrument filed for Record this 19 day of JANUARY, 1953, and recorded in Book 31 of Plats at Page 1, RECORD VERIFIED.

Ted Cabot
CLERK OF THE CIRCUIT COURT
By: Dorothy Adams
DEPUTY CLERK

STATE OF FLORIDA, }
COUNTY OF BROWARD } ss

I HEREBY CERTIFY: that this Plat is a true and correct representation of a Survey made by me and that Permanent Reference Monuments have been set as indicated.

Dated at Fort Lauderdale, Florida, this 30th day of DECEMBER, 1952.

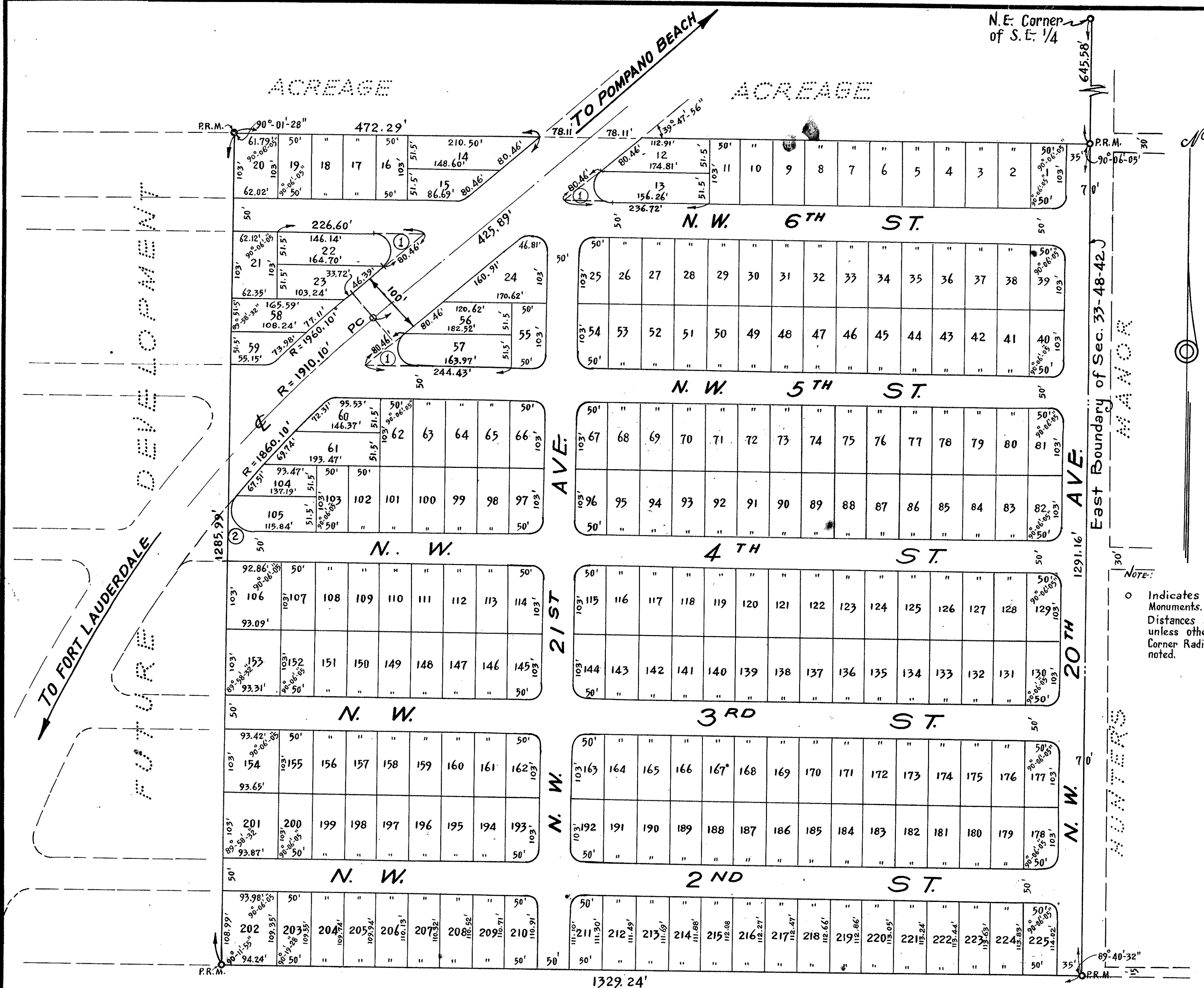
J. W. McLaughlin
REGISTERED ENGINEER No. 1713
REGISTERED LAND SURVEYOR No. 161
STATE OF FLORIDA

Approved for Record:

Robert L. Parker
COUNTY ENGINEER

As owners and holders of a Mortgage on the above described property, I hereby approve this Plat.

Robert L. Parker
Alma Parker



NOTE:
Indicates Permanent Reference Monuments.
Distances are to Tangent Intersections unless otherwise indicated.
Corner Radii are 20 feet unless otherwise noted.

Collier City

SEC. 33, TWP. 48 S., RGE. 42 E.
BROWARD COUNTY, FLORIDA

J. W. McLAUGHLIN - CIVIL ENGINEER
FORT LAUDERDALE - FLORIDA

SCALE: 1" = 100' JANUARY 1953

CURVE DATA

①	Δ =	14° - 12' - 04"
	R =	28.02'
	T =	80.46'
	Arc =	68.56'
②	Δ =	134° - 47' - 56"
	R =	30.21'
	T =	72.57'
	Arc =	71.07'

DRC